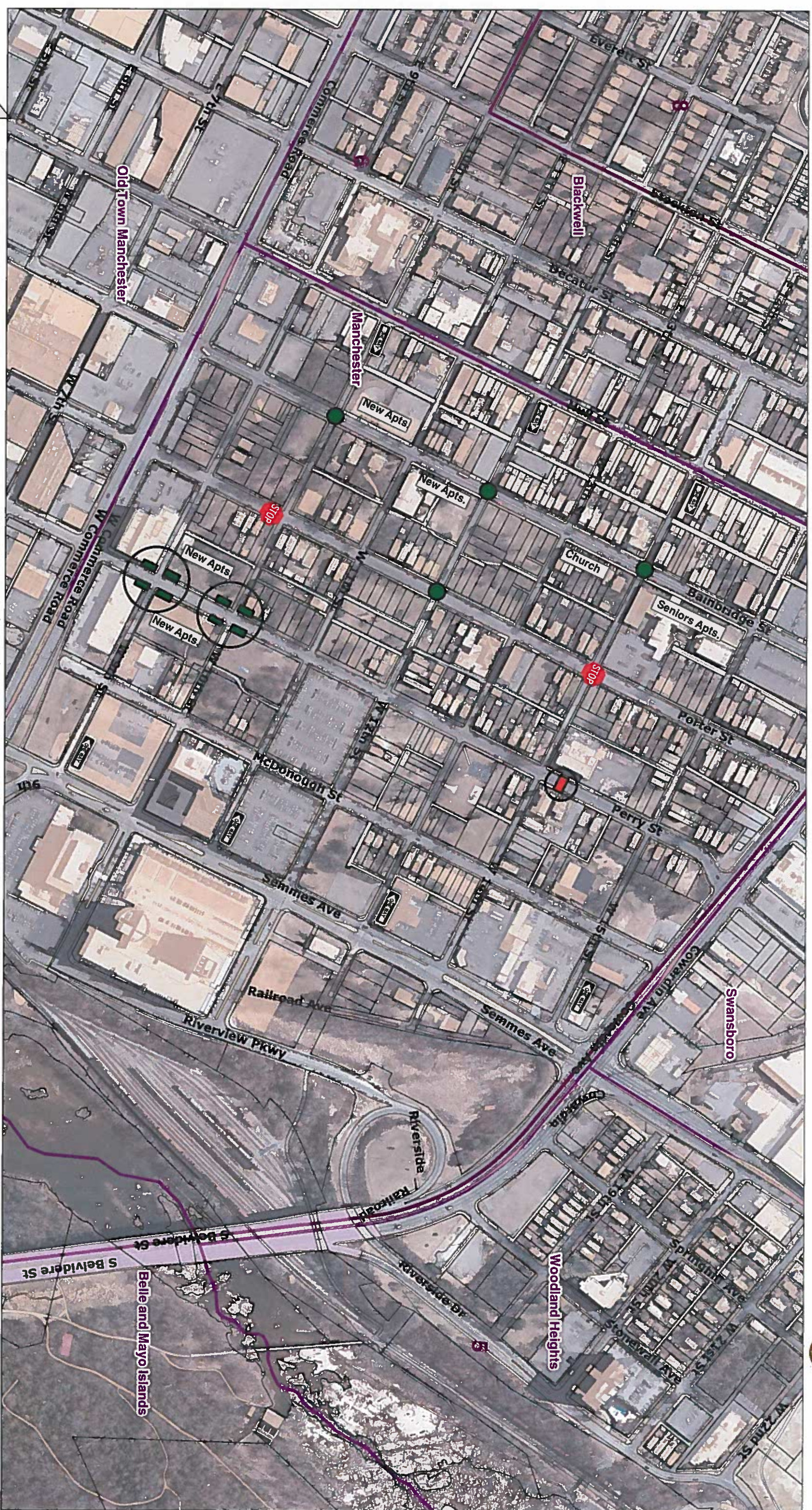


Proposed traffic calming measures on Manchester neighborhood



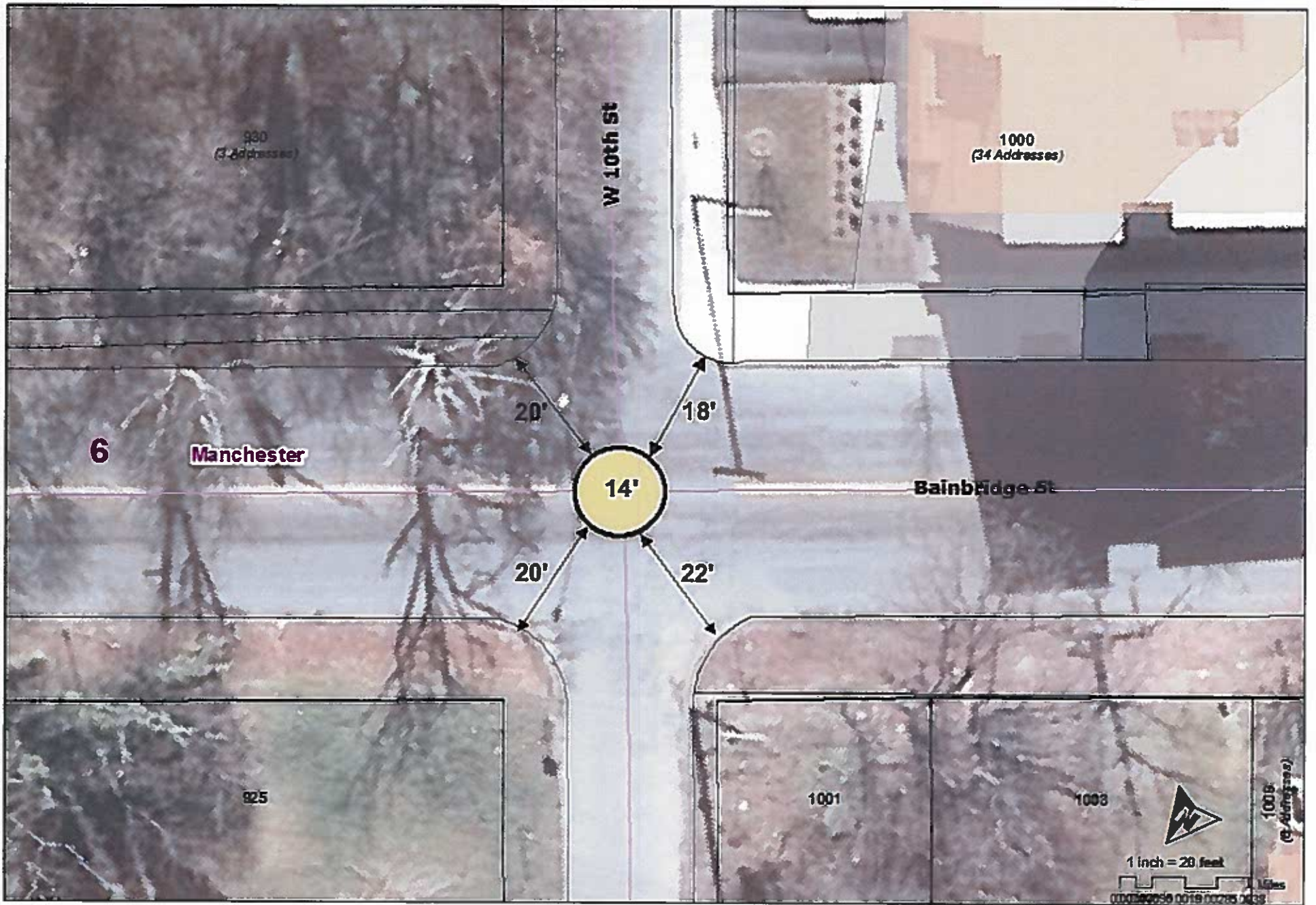
Legend:

- Proposed Circles
- Proposed Chokers
- Switch Stop signs
- Existing raised crosswalk

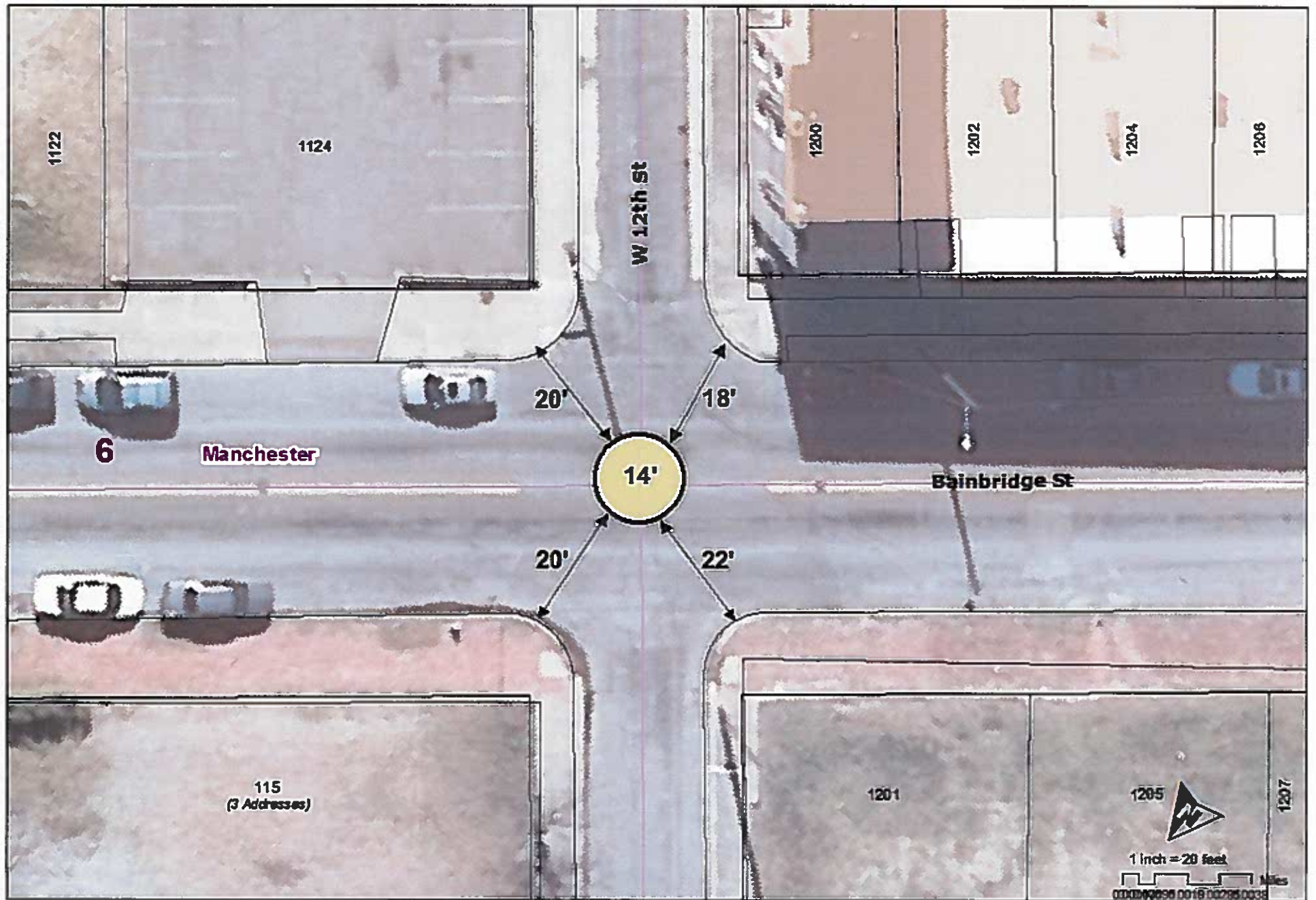
1 inch = 325 feet



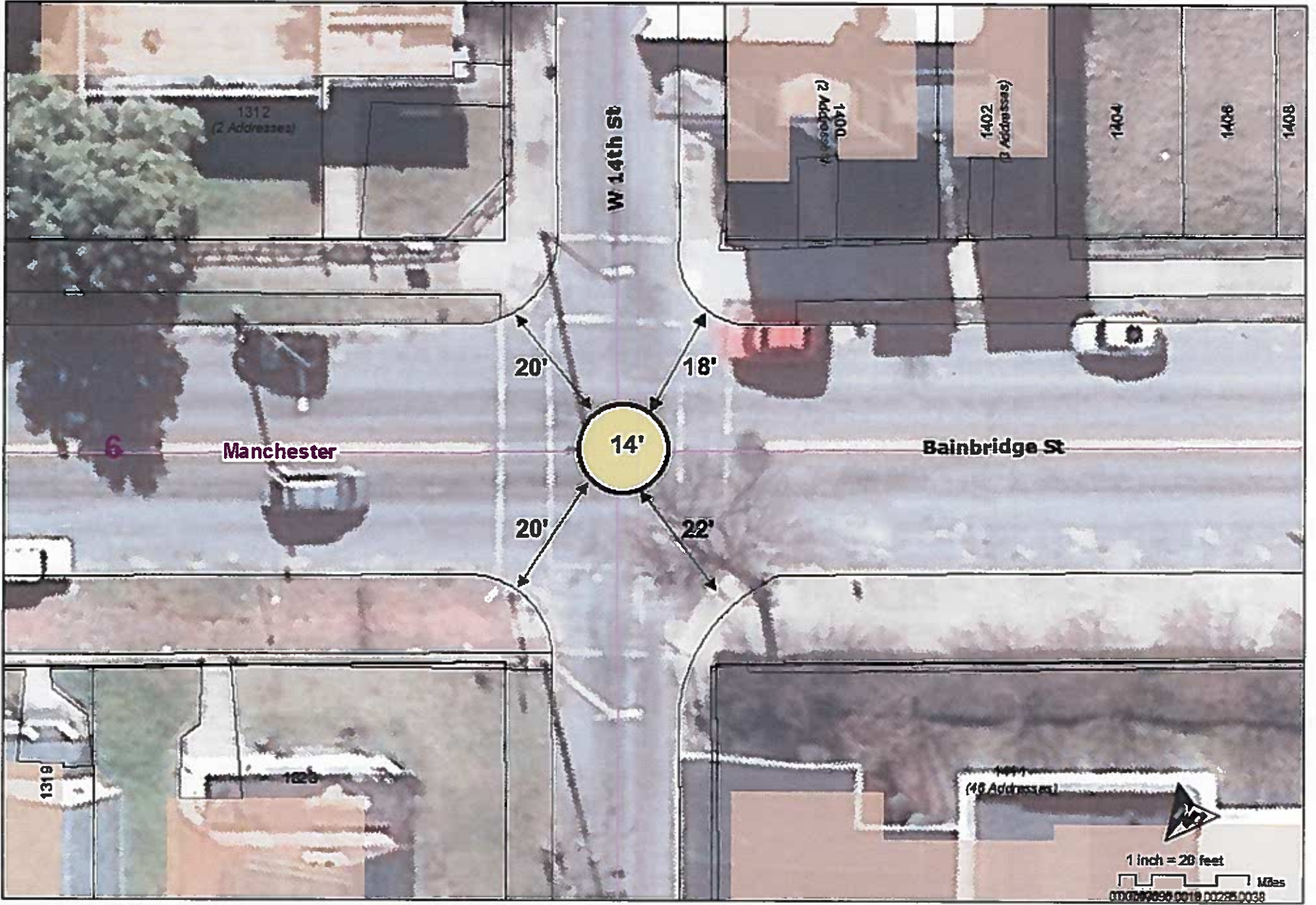
Traffic circle concept on Bainbridge St at 10th St



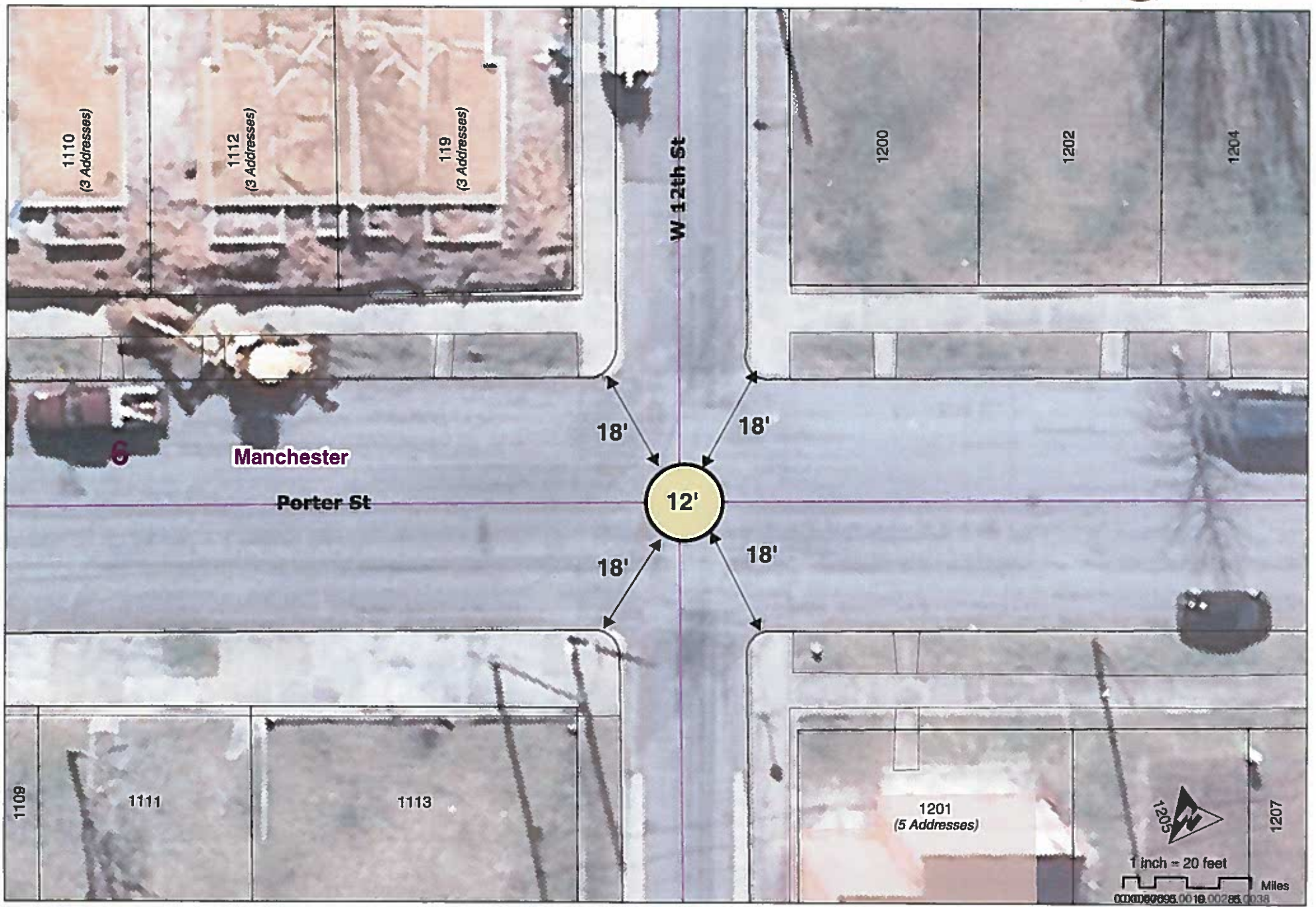
Traffic circle concept on Bainbridge St at 12th St



Traffic circle concept on Bainbridge St at 14th St



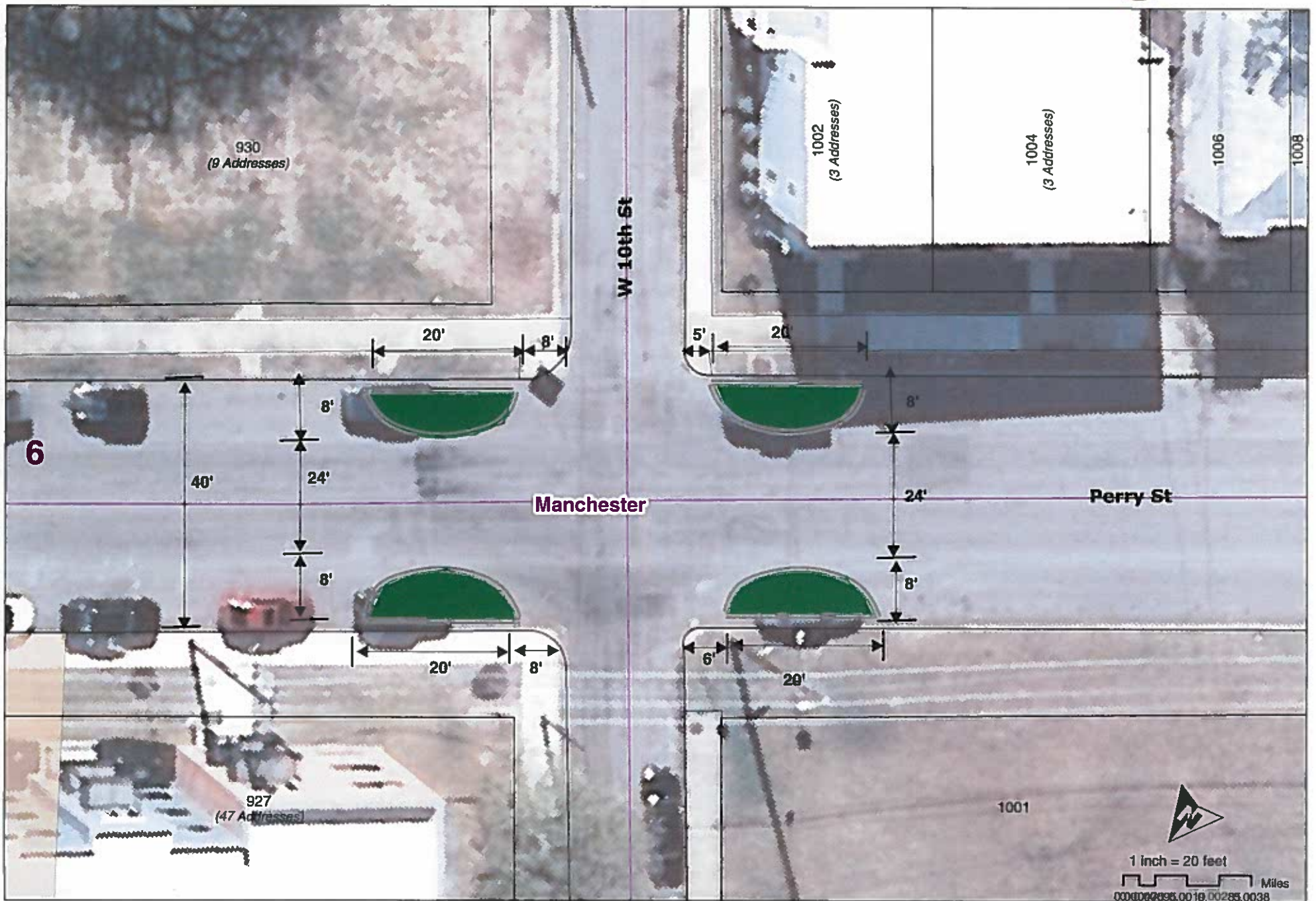
Traffic circle concept on Porter St at 12th St



Chokers concept on Perry St at 10th St



City of Richmond



Chokers concept on Perry St at 9th St



City of Richmond



Map printed by ryesma on 2016.03.14.